



A Professional Manufacturer of Display

Manufacturer Certificated



CERT. No.: 282Q19070712006



CERT. No.: 282E19070712007

Product Specification

Model: TTC034XRE-03C1

3.4" TFT Display Module(800*800)

This module uses RoHS material

Tailor Pixels Technology Co., Ltd.

www.tailorpixels.com

tailor@tailorpixels.com

Ph: 86-755-8821 2653

Table of Contents

Revision History	3
1 General Specifications	4
2 Pin Assignment	5
3 Absolute Maximum Ratings	6
4 Electrical Characteristics	6
5 INTERFACE TIMING	8
5.1 System Bus Read/Write Characteristics	8
5.2 Power ON/OFF Timing	9
6 Optical Characteristics	10
7 Environmental / Reliability Test	14
8 Mechanical Drawing	15
9 Precautions For Use of LCD Modules	16

Revision History

Rev	Issued Date	Description	Page	Editor
1.0	2024/11/14	First release	All	

1 General Specifications

Feature		Specifications
Display Spec.	LCD type	3.4 inch
	Resolution (H*V)	800(RGB) *800
	Technology Type	a-Si TFT
	Pixel Configuration	R.G.B. Vertical Stripe
	Display Mode	IPS/Transmissive/Normally Black
	Viewing Direction	All
	Gray Scale Inversion Direction	--
Mechanical Characteristics	OutlineDimensions (W x H x T) (mm)	112.5(H) *112.5(V)*3.57(T)
	Active Area(mm)	87.6 (H)*87.6(V)
	With /Without Touch screen	With
	Match Connector Type	0.5 Pitch 30 Pin
	Backlight Type	White LED
	Weight (g)	TBD
Electrical Characteristics	Interface	MIPI 4 Lane/MIPI 2Lane
	Number of color	16.7M
	Driver IC	JD9365DA-H3

2 Pin Assignment

NO.	PIN NAME	Description
1	LEDA	LED anode
2	LEDK	LED Cathode
3	LEDK	LED Cathode
4	VCI	Power Supply 2.8~3.3V
5	IOVCC	Power Supply 1.8V-3.3V
6	RESET	LCM reset signals
7	TE	Tearing effect output
8	PWM	The PWM frequency output for LCD driver control.
9	GND	Ground
10	D0P	DSI-D0+ data signals
11	D0N	DSI-D0- data signals
12	GND	Ground
13	D1P	DSI-D1+ data signals
14	D1N	DSI-D1- data signals
15	GND	Ground
16	CLKP	DSI-Clock+
17	CLKN	DSI-Clock-
18	GND	Ground
19	D2P	DSI-D2+ data signals
20	D2N	DSI-D2- data signals
21	GND	Ground
22	D3P	DSI-D3+ data signals
23	D3N	DSI-D3- data signals
24	GND	Ground
25	TP_INT	Touch Interrupt 3.3V
26	TP_SDA	Touch IIC Data signal 3.3V
27	TP_SCL	Touch IIC Clock signal 3.3V
28	TP_RESET	Touch Reset Signal
29	TP_VCI	Touch Power supply 3.3V
30	GND	Ground

3 Absolute Maximum Ratings

GND=0V, Ta= 25°C

Item	Symbol	Value	Unit
Power supply voltage for logic	V _{Cl}	0.3~3.6	V
Power supply voltage for IO	V _{IOVCC}	0.3~3.6	V
Operating temperature	T _{opr}	-20 to 70	°C
Storage temperature	T _{stg}	-30 to 80	°C

4 Electrical Characteristics

4.1 Driving TFT LCD Panel

GND=0V, Ta=25°C

Item	Symbol	Min	Type	Max	Unit	Test condition
Operating voltage Supply current	V _{Cl}	2.6	2.8	3.3	V	V _{Cl} = V _{IOVCC} = TP-V _{Cl} = 3.3V, Ta=25°C
	V _{IOVCC}	1.65	1.8	3.3	V	
	I _{DD}	-	61	90	mA	
Input voltage	V _{IH}	0.7IOVCC	-	IOVCC	V	
	V _{IL}	0	-	0.3IOVCC	V	

Note: Voltage greater than above may damage the module.

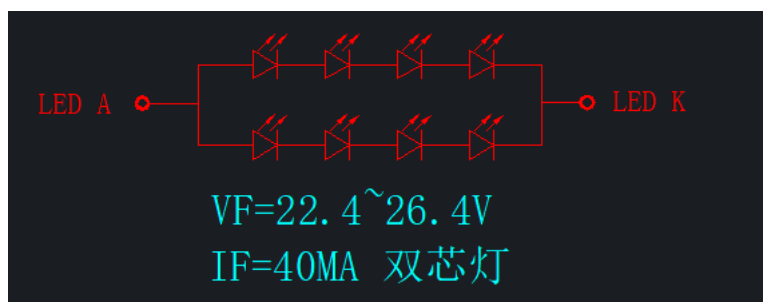
All voltages are specified relative to VSS=0V.

4.2 Driving Backlight

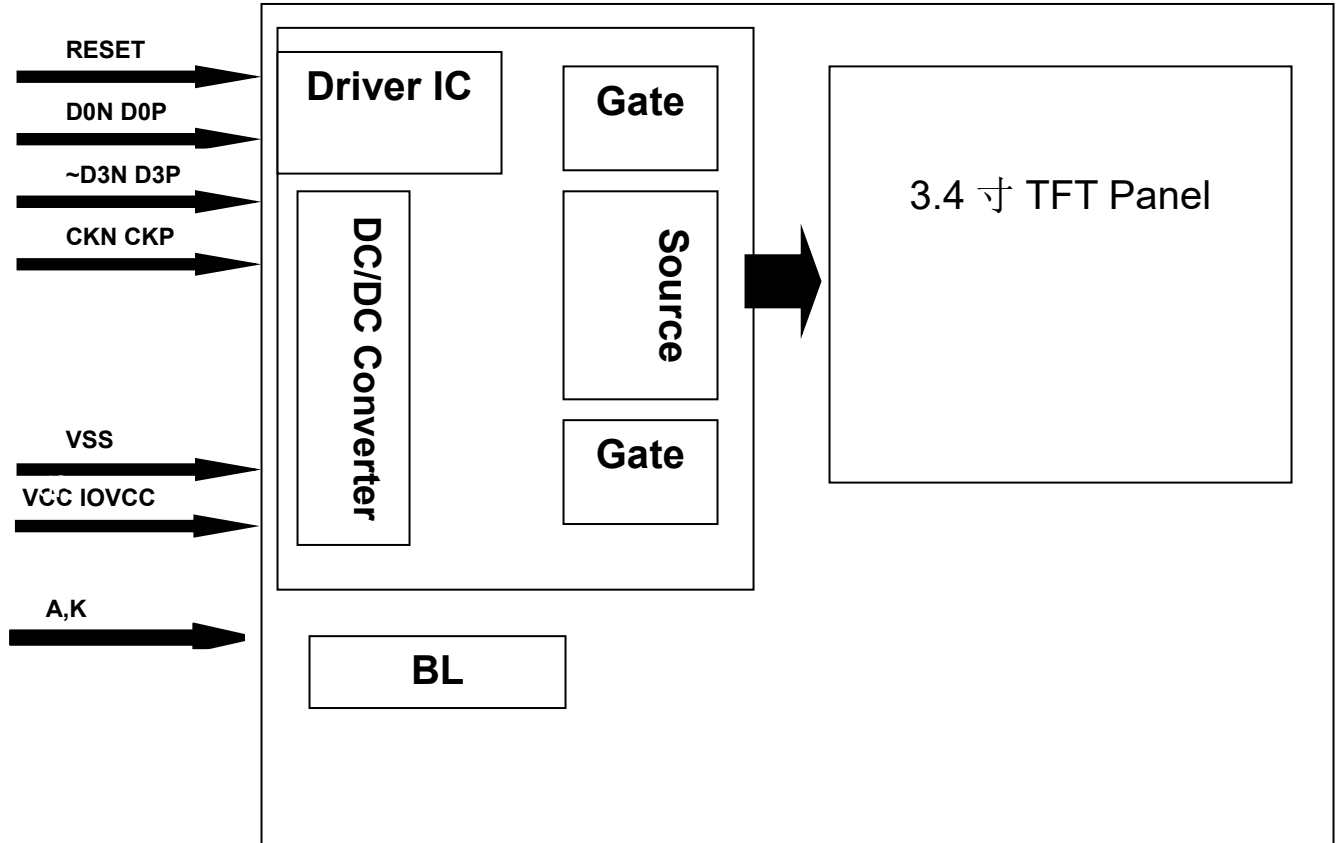
Ta=25°C

Item	Symbol	Min	Typ	Max	Unit	Remark
Forward Current	I _F	--	40	-	mA	
Forward Voltage	V _F	22.4	24	26.4	V	
Connection mode	P	-	4S2P	-		
LED number	/	-	8	-	pcs	
LED life time		20000			hours	

Note1: Optical performance should be evaluated at Ta=25°C only .If LED is driven by high current, high ambient temperature & humidity condition. The life time of LED will be reduced. Operating life means brightness goes down to 50% initial brightness. Typical operating life time is estimated data.



4.3 Block Diagram



5 INTERFACE TIMING

5.1 DSI Interface Timing Characteristics.

High Speed Mode

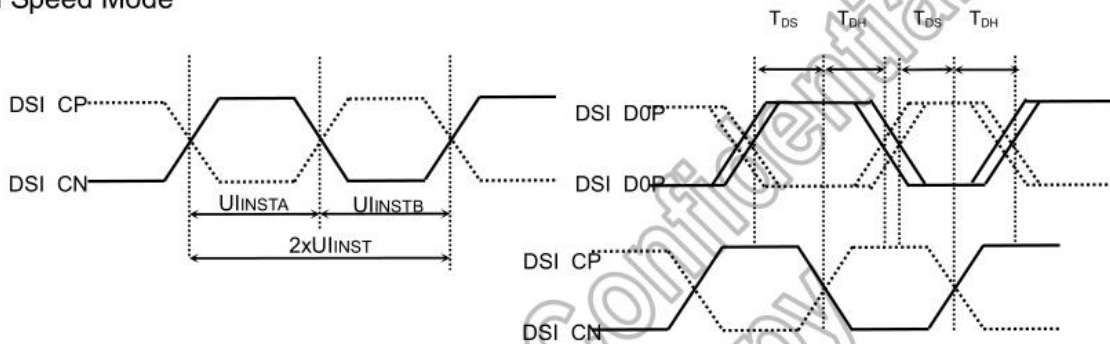
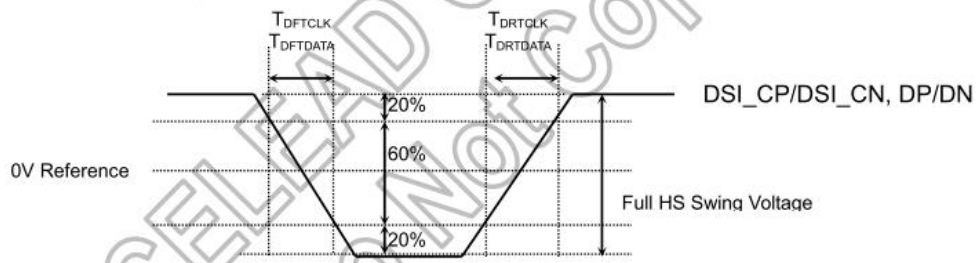


Figure 7.4: DSI clock timing Characteristics



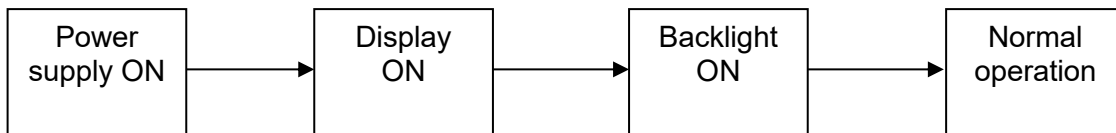
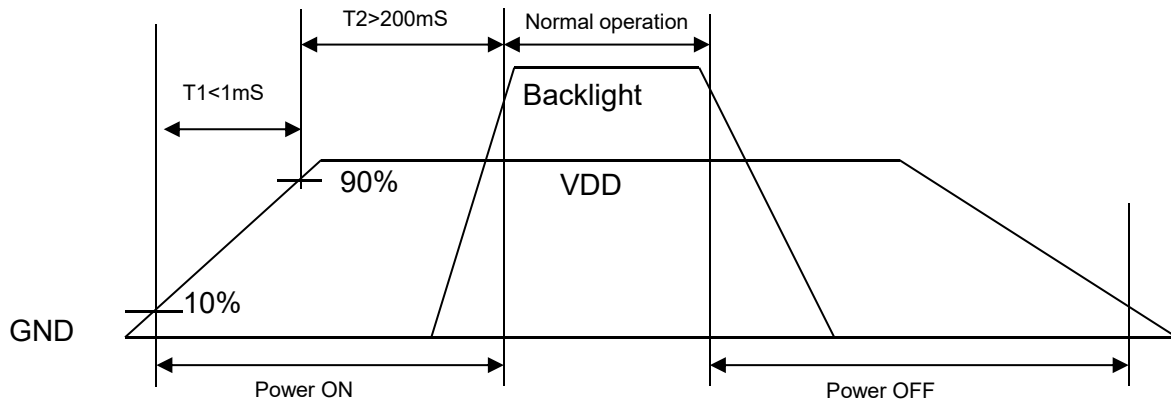
Rising and falling time on clock and data channel

(VSSA=0V, IOVCC=1.65V to 3.3V, VCI=2.5V to 3.3V, $T_A = -30$ to 70°C)

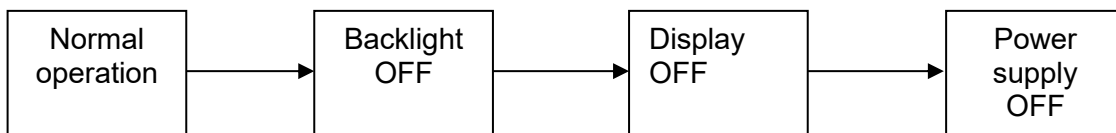
Signal	Item	Symbol	Spec.			Unit
			Min.	Typ.	Max.	
DSI_CP/ DSI_CN	Double UI instantaneous	$2xUI_{INST}$	TBD	-	25	ns
	UI instantaneous	UI_{INSTA} UI_{INSTB}	TBD	-	12.5	ns
DP/DN	Data to clock setup time	T_{DS}	$0.15xUI$	-	-	ps
	Data to clock hold time	T_{DH}	$0.15xUI$	-	-	ps
DSI_CP/ DSI_CN	Differential rise time for clock	T_{DRCLK}	150	-	$0.3UI$	ps
	Differential fall time for clock	T_{DFCLK}	150	-	$0.3UI$	ps
DP/DN	Differential rise time for data	T_{DRDATA}	150	-	$0.3UI$	ps
	Differential fall time for data	T_{DFDATA}	150	-	$0.3UI$	ps

DSI High Speed Mode Characteristics

5.2 Power ON/OFF Timing



Power ON sequence



Power OFF sequence

6 Optical Characteristics

Ta=25°C

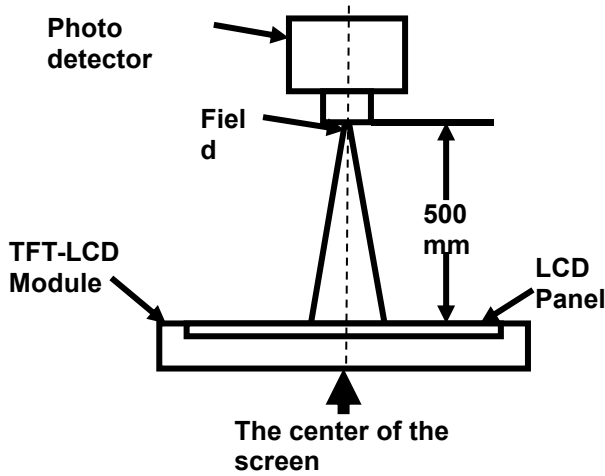
Item	Symbol	Condition	Min	Typ	Max	Unit	Remark
View Angles	θT	$CR \geq 10$	80	85	-	Degree	Note 2
	θB		80	85	-		
	θL		80	85	-		
	θR		80	85	-		
Contrast Ratio	CR	$\theta=0^\circ$	800	1000	-	-	Note1 Note3
Response Time	T_{ON}	25°C	-	25	35	ms	Note1
	T_{OFF}						Note4
Uniformity	U	-	70	80	-	%	Note1 Note6
NTSC	-	-	63	68	-	%	Note 5
Luminance	L		595	680	-	cd/m ²	Note1 Note7

Test Conditions: $V_F=24V$, $I_F=40mA$, the ambient temperature is 25°C.

1. The test systems refer to Note 1 and Note 2.

Note 1: Definition of optical measurement system.

The optical characteristics should be measured in dark room. After 5 minutes operation, the optical properties are measured at the center point of the LCD screen. All input terminals LCD panel must be ground when measuring the center area of the panel.



Item	Photo detector	Field
Contrast Ratio	SR-3A	1°
Luminance		
Chromaticity		
Lum Uniformity	BM-7A	2°
Response Time		

Note 2: Definition of viewing angle range and measurement system.

viewing angle is measured at the center point of the LCD by CONOSCOPE(ergo-80).

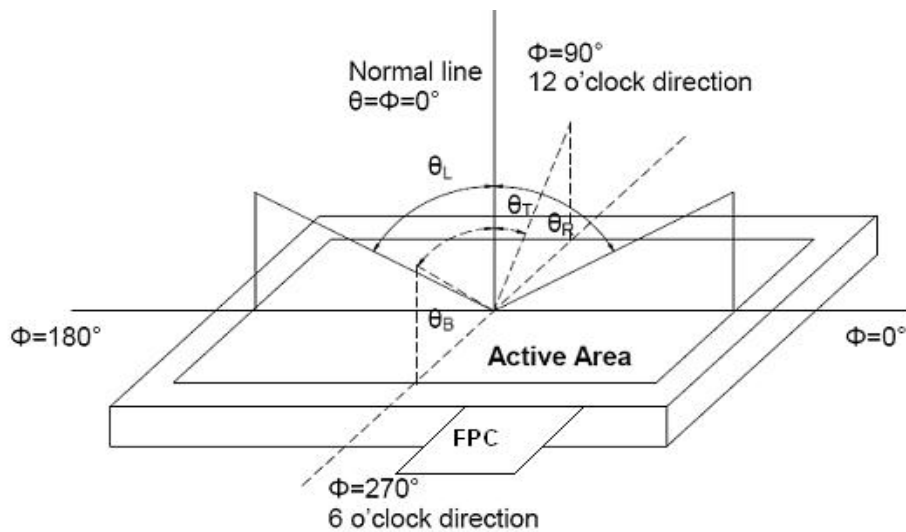


Fig. 1 Definition of viewing angle

Note 3: Definition of contrast ratio

$$\text{Contrast ratio (CR)} = \frac{\text{Luminance measured when LCD is on the "White" state}}{\text{Luminance measured when LCD is on the "Black" state}}$$

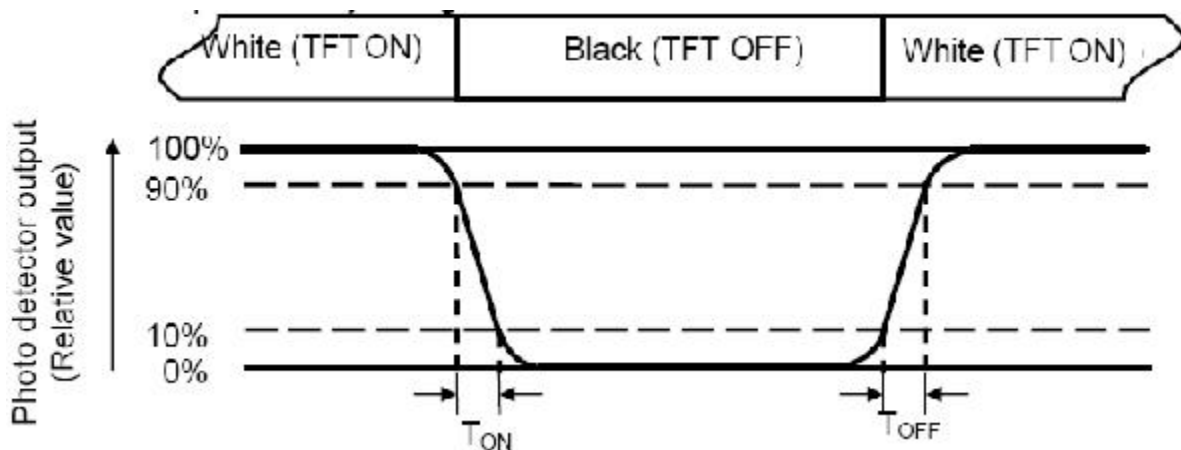
“White state “:The state is that the LCD should be driven by V_{white} .

“Black state”: The state is that the LCD should be driven by V_{black} .

V_{white} : To be determined V_{black} : To be determined.

Note 4: Definition of Response time

The response time is defined as the LCD optical switching time interval between “White” state and “Black” state. Rise time (T_{ON}) is the time between photo detector output intensity changed from 90% to 10%. And fall time (T_{OFF}) is the time between photo detector output intensity changed from 10% to 90%.



Note 5: Definition of color chromaticity (CIE1931)

Color coordinates measured at center point of LCD.

Note 6: Definition of Luminance Uniformity

Active area is divided into 9 measuring areas (Refer Fig. 2). Every measuring point is placed at the center of each measuring area.

Luminance Uniformity (U) = L_{min} / L_{max}

L-----Active area length W----- Active area width

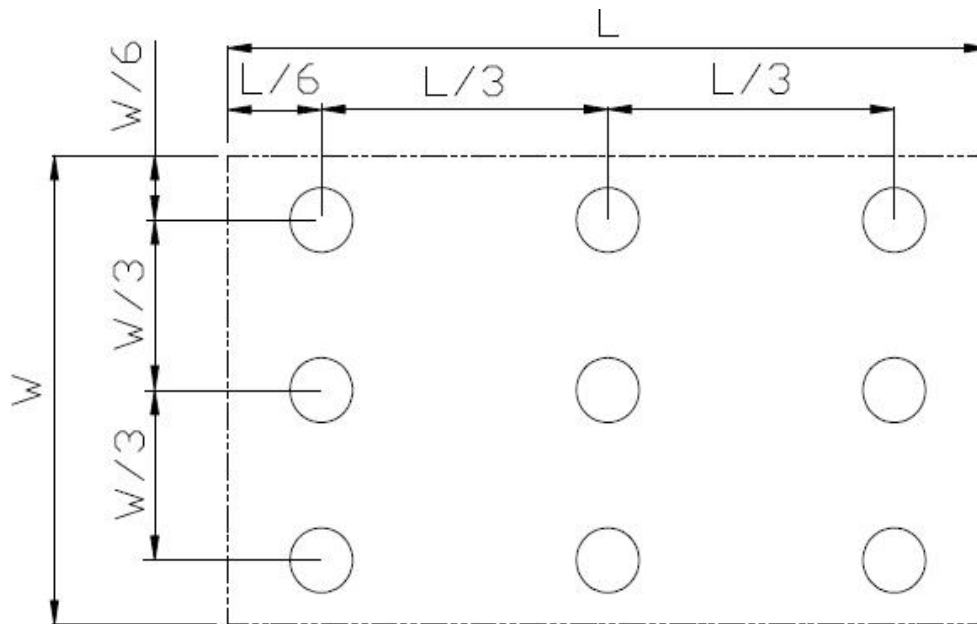


Fig. 2 Definition of uniformity

L_{max} : The measured maximum luminance of all measurement position.

L_{min} : The measured minimum luminance of all measurement position.

Note 7: Definition of Luminance:

Measure the luminance of white state at center point.




7 Environmental / Reliability Test

Item	Condition	Time (hrs)	Assessment
High temp. Storage	80°C	96	No abnormalities in functions and appearance
High temp. Operating	70°C	96	
Low temp. Storage	-30°C	96	
Low temp. Operating	-20°C	96	
Humidity	60°C/ 90%RH	96	
Thermal Shock(Non-operation)	-20°C ← 25°C →70°C (0.5 hour ← 5 min → 0.5 hour)	10cycles	

Remark:

- 1.The test samples should be applied to only one test item.
- 2.Sample size for each test item is 1~10pcs.
- 3.In case of malfunction defect caused by ESD damage, if it would be recovered to normal state after resetting, it would be judged as a good part.

8 Mechanical Drawing

1	2	3	4	5	6	7	8														
		DESIGN: (设计)	CHECKED: (检查)	APPROVED: (批准)	SPECIFICATION	规格															
Date: (日期) 2024.11.14		Page: (页数) 1/1	图纸视角: 	CUSTOMER'S CODE: (客户型号) TTC034XRE-03CI	TPS' CODE: (料号)	EDITION: (版本号)	EDITION: (版本号) 01														
																					
<p>Notes:</p> <ol style="list-style-type: none"> Unit:mm. Modification rev.number. All radii without dimension R0.3mm. All draft angles to be 1.5°. Unspecified Tolerances is: ±0.20mm. Driver IC: J09365DA LED Driver Voltage :VCI:2.8-3.3V IOWCC:1.65-3.3V Color: White Operating Temperature : -20° — +70° C Storage Temperature : -30° — +80° C Requirements on Environmental Protection: ROHS HSF 		<p>TP参数:</p> <ol style="list-style-type: none"> 结构:G+F+P全贴 (0.7mmGlass+0.43mmSensor) LCM-IC: J09365DA, TP-IC: GT928 TP工作电压: 2.8-3.3 V; IO电压:2.8-3.3V; 表面硬度: ≥6H 工作环境: -20°C~+70°C, ≤90%RH 储存环境: -25°C~+75°C, ≤90%RH *号标记为重点尺寸,未注公差±0.2mm 		<p>TP-PIN:</p> <table border="1" style="width:100%; border-collapse: collapse;"> <tr><td>1</td><td>GND</td></tr> <tr><td>2</td><td>TP_INT</td></tr> <tr><td>3</td><td>TP_SDA</td></tr> <tr><td>4</td><td>TP_SCL</td></tr> <tr><td>5</td><td>TP_RESET</td></tr> <tr><td>6</td><td>TP_VCI</td></tr> <tr><td>7</td><td>NC</td></tr> </table>		1	GND	2	TP_INT	3	TP_SDA	4	TP_SCL	5	TP_RESET	6	TP_VCI	7	NC	<p>LED CIRCUIT DIAGRAM:</p>	
1	GND																				
2	TP_INT																				
3	TP_SDA																				
4	TP_SCL																				
5	TP_RESET																				
6	TP_VCI																				
7	NC																				
<p>客户名称</p>		<p>Approval Date: 承认日期</p>		<p>Approved By: 承认</p>		<p>Please Confirm This Drawing On/Before 请 签回 此 图</p>															
1	2	3	4	5	6	7	8														

9 Precautions For Use of LCD Modules

9.1 Handling Precautions

9.1.1.1 The display panel is made of glass. Do not subject it to a mechanical shock by dropping it from a high place, etc.

9.1.1.2 If the display panel is damaged and the liquid crystal substance inside it leaks out, be sure not to get any in your mouth, if the substance comes into contact with your skin or clothes, promptly wash it off using soap and water.

9.1.1.3 Do not apply excessive force to the display surface or the adjoining areas since this may cause the color tone to vary.

9.1.1.4 The polarizer covering the display surface of the LCD module is soft and easily scratched. Handle this polarizer carefully.

9.1.1.5 If the display surface is contaminated, breathe on the surface and gently wipe it with a soft dry cloth. If still not completely clear, moisten cloth with one of the following solvents:

- Isopropyl alcohol
- Ethyl alcohol

Solvents other than those mentioned above may damage the polarizer. Especially, do not use the following:

- Water
- Ketone
- Aromatic solvents

9.1.1.6 Do not attempt to disassemble the LCD Module.

9.1.1.7 If the logic circuit power is off, do not apply the input signals.

9.1.1.8 To prevent destruction of the elements by static electricity, be careful to maintain an optimum work environment.

9.1.1.9 Be sure to ground the body when handling the LCD Modules.

9.1.1.10 Tools required for assembly, such as soldering irons, must be properly ground.

9.1.1.11 To reduce the amount of static electricity generated, do not conduct assembly and other work under dry conditions.

9.1.1.12 The LCD Module is coated with a film to protect the display surface. Be care when peeling off this protective film since static electricity may be generated.

9.1.1.13 Storage precautions

9.1.1.14 When storing the LCD modules, avoid exposure to direct sunlight or to the light of fluorescent lamps.

9.1.1.15 The LCD modules should be stored under the storage temperature range. If the LCD modules will be stored for a long time, the recommend condition is:

9.1.1.16 The LCD modules should be stored in the room without acid, alkali and harmful gas.

9.2 Transportation Precautions

The LCD modules should be no falling and violent shocking during transportation, and also should avoid excessive press, water, damp and sunshine.