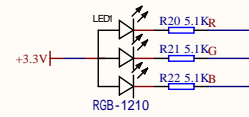


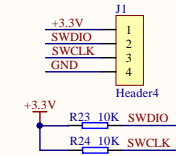
# YB-MSA02-v1.0

## STM32F03RCT6

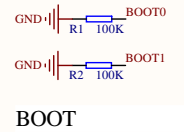
### RGB灯



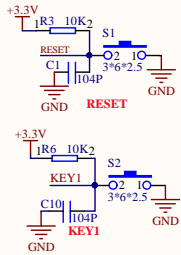
### SWD接口



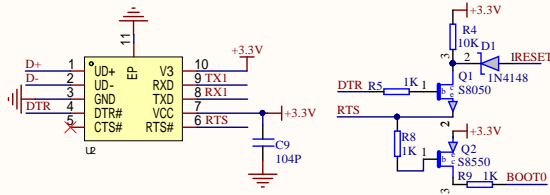
### BOOT



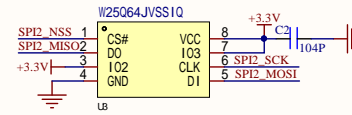
### 功能按键



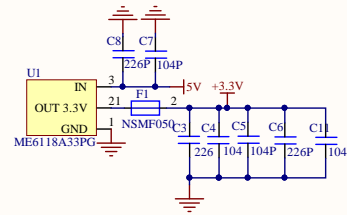
### 串口自动下载



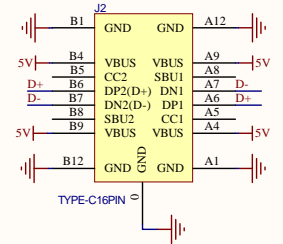
### Flash



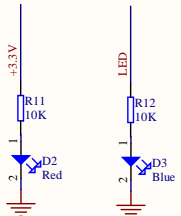
### 3.3V供电



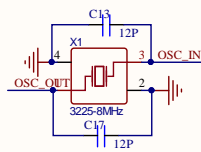
### TYPE-C通信接口



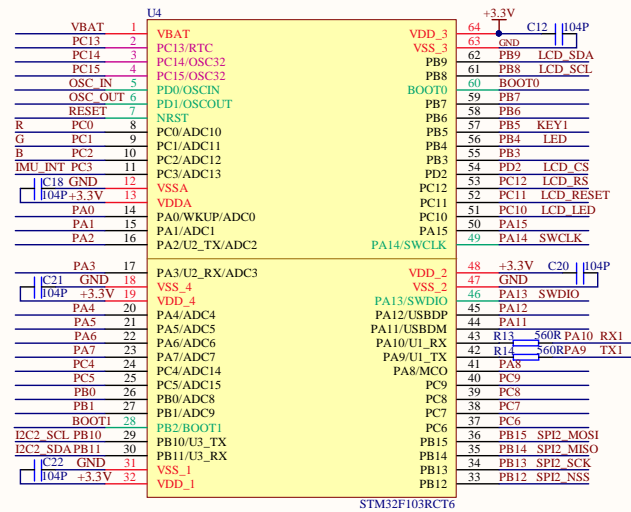
### USB通信



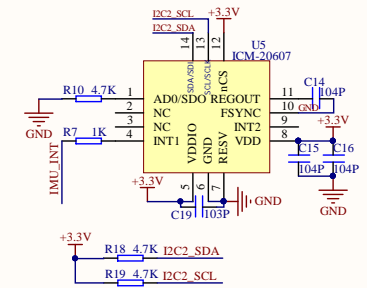
### 8M晶振



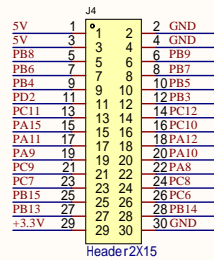
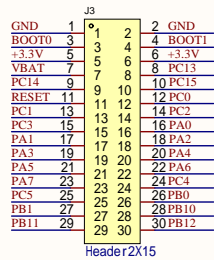
### MCU



### 陀螺仪



### 排针接口



### LCD显示屏

