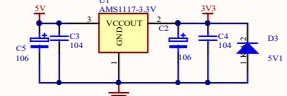


预留5V输入接口，连接器间距2.54mm



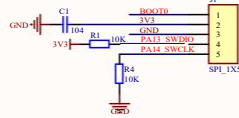
供电稳压供电

BOOT0	BOOT1	启动方式
0	无	用户闪存
1	0	ISP下载模式
1	1	内部RAM

STM32工作模式已经默认接地; BOOT0通过R7接地

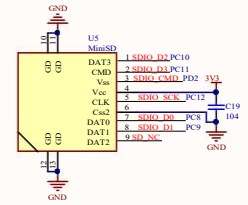
STM32工作模式选择

SWD调试编程接口

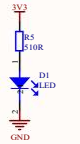


TFT液晶屏接口

可以接本店: 0.96寸、1.3寸OLED液晶屏 1.3寸、2.0寸TFT高清液晶屏
1.44寸、1.8寸TFT液晶屏 2.4寸、2.8寸TFT液晶屏



SD/TF卡接口(小卡座, 自弹)



供电指示灯

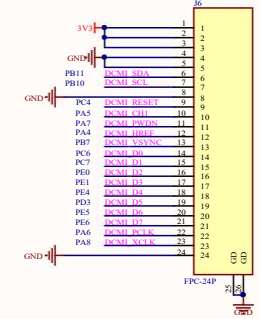
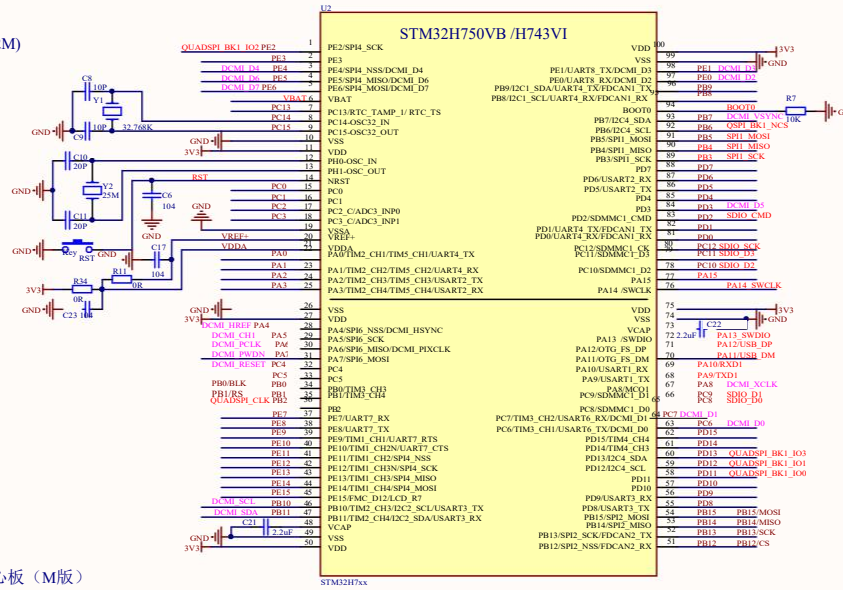
STM32H750VB /H743VI核心板

内核: Cortex-M7

(H750VB) FLASH: 128K

(H743VI) FLASH: 2048K (2M)

RAM: 1024K



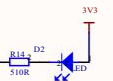
可以接本店摄像头模块:

OV2640-200万像素

OV5640-500万像素(自动对焦)

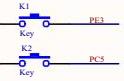
此处为FPC插座(翻盖式)
店铺可以选购FPC转接延长线

DCMI接口-摄像头插座

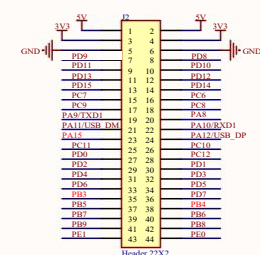


LED指示灯

STM32H750VB /H743VI核心板 (M版)

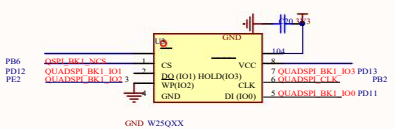


按键



扩展IO接口

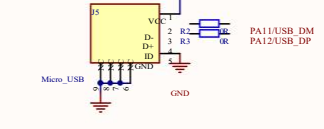
接口支持QSPI接口模式



外部存储FLASH

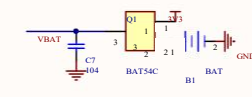
标准MicroUSB接口

即常见安卓手机供电接口



USB供电接口 (STM32 USB Slave)

实时时钟备用电池接口B1 (预留)



Title		STM32H750VB /H743VI核心板 (M版)	
Size	Number		
A2			
File: Z:\VMDOC\STM32_H7XX_M.SchDoc Drawn By:			

直径3mm

