

# STM32Cube Verison



Version 4.22.0

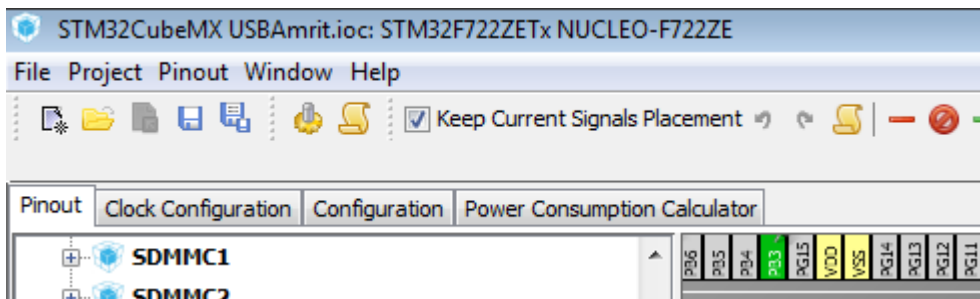
STM32Cube V1.0

<http://www.st.com/stm32cube>

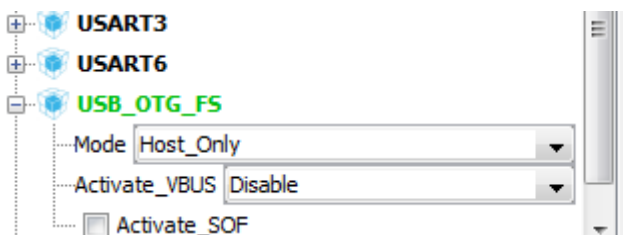
Copyright (c) 2010-2018 STMicroelectronics



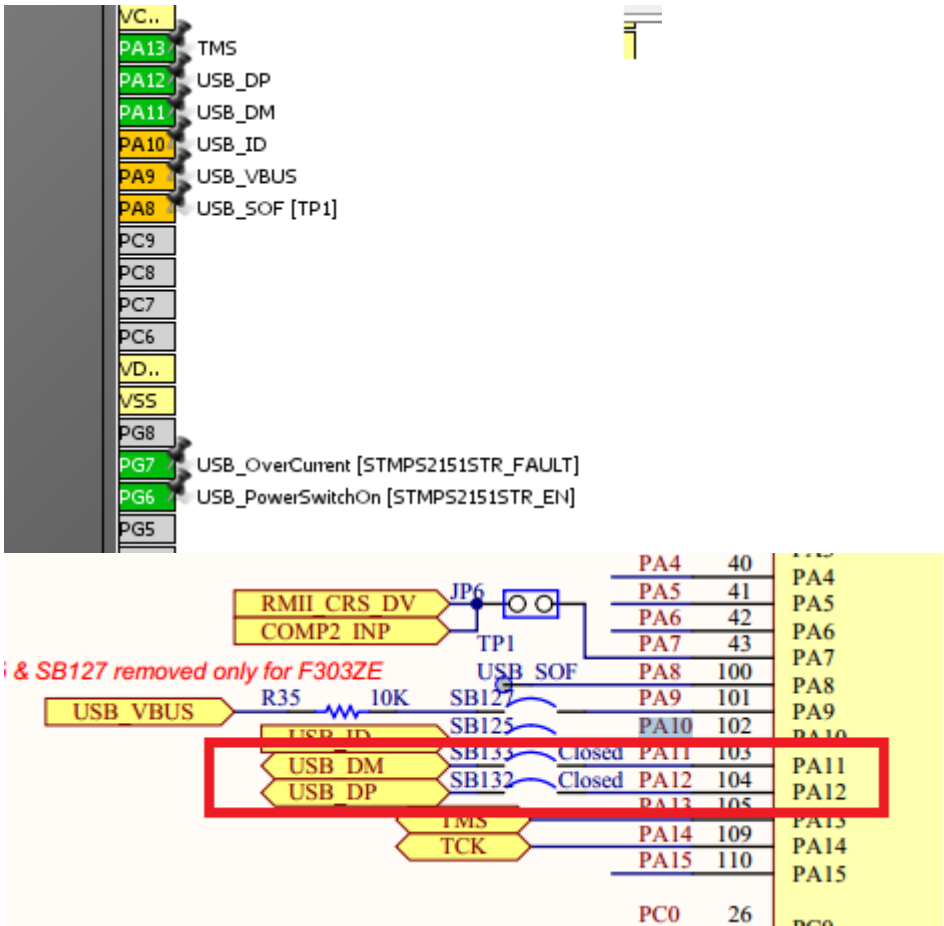
## Step 1: STM32F722ZETx



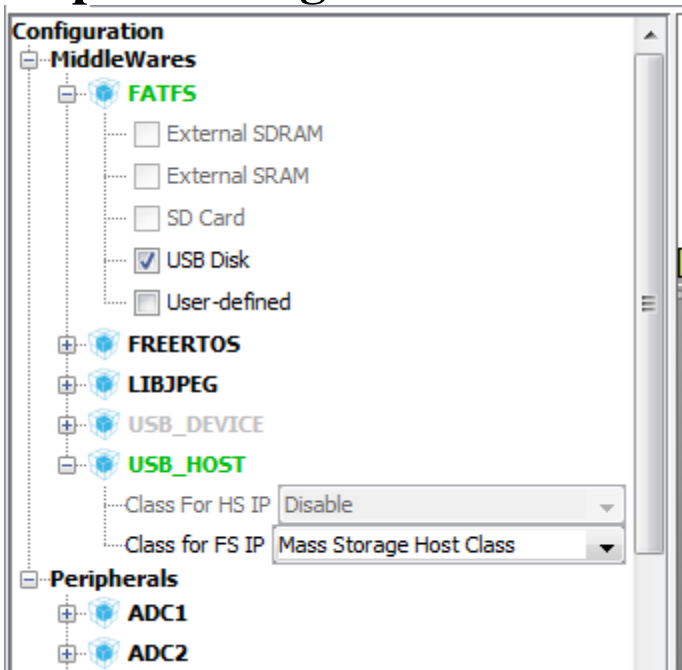
## Step 2: Enable Host Only Mode



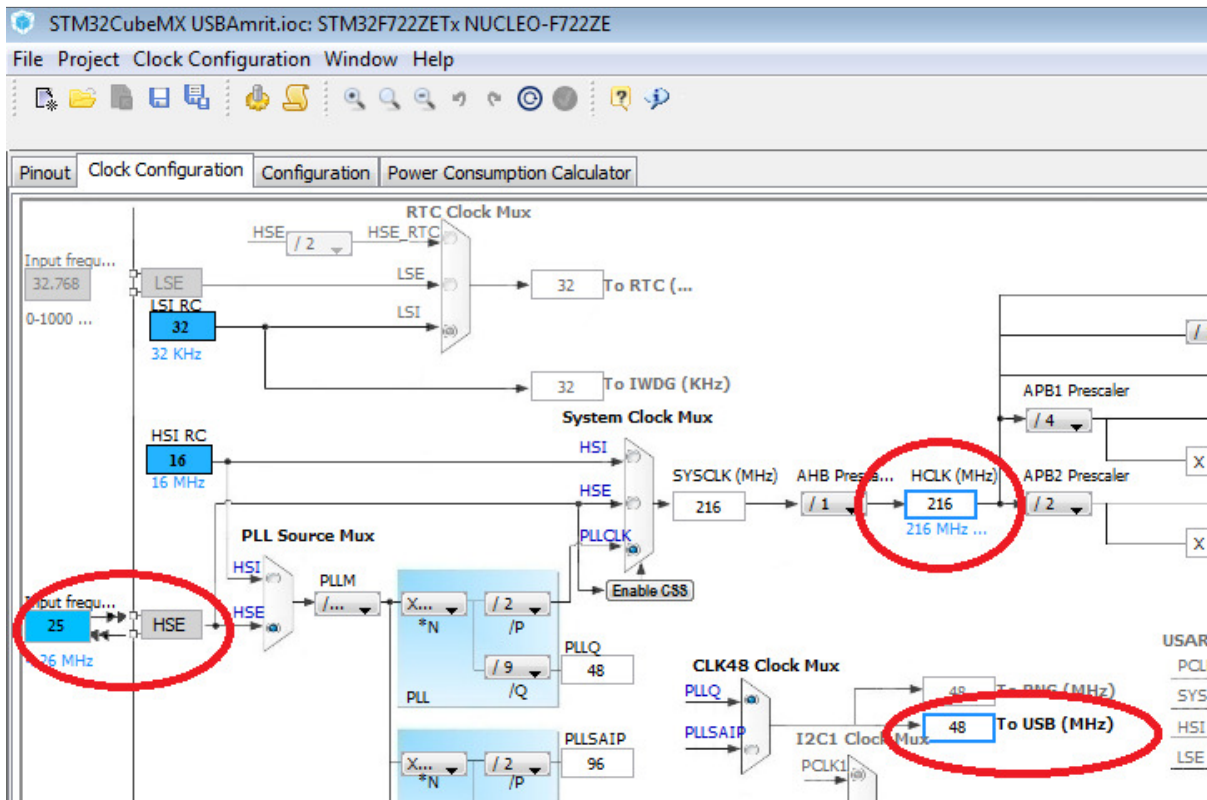
## Step 3: Configure Pins according to NUCLEO-F722ZE STM32F7 Nucleo-144 Board



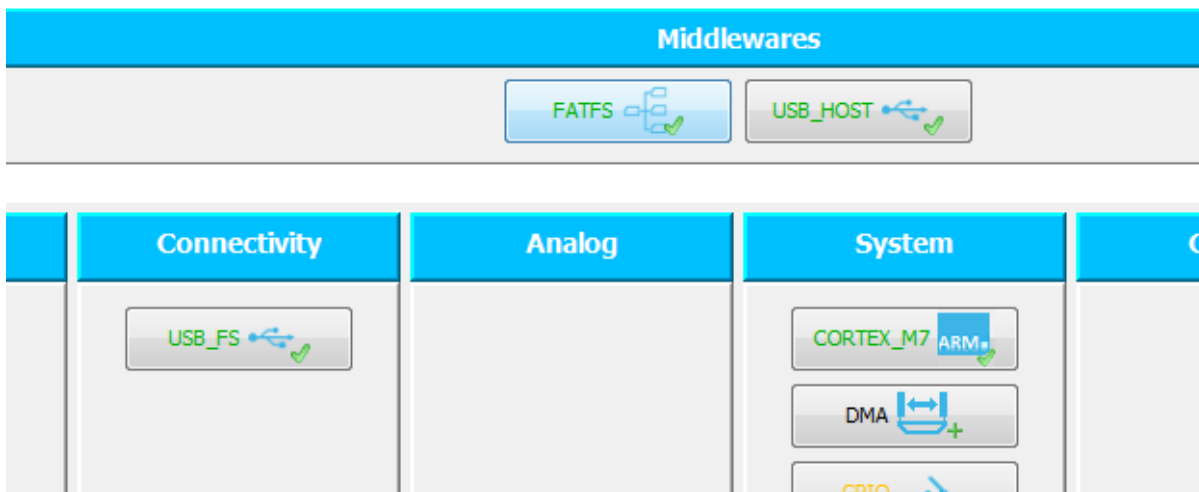
## Step 4: Configure Middleware



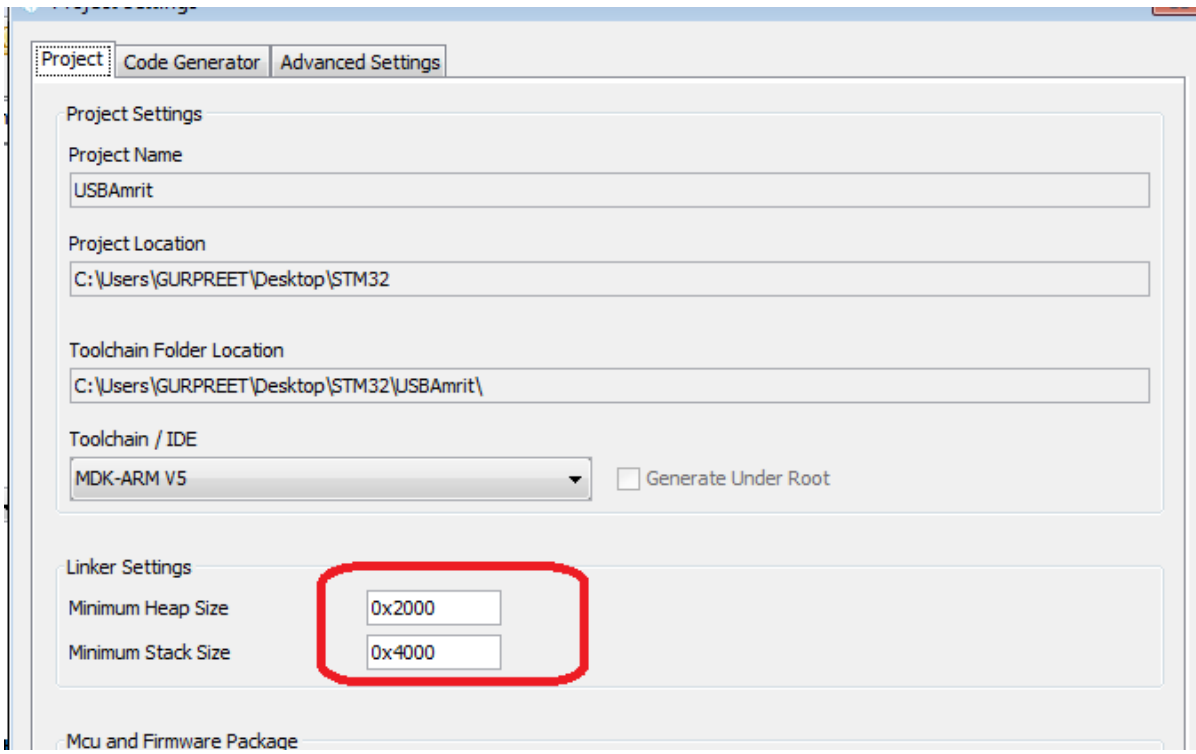
## Step 5: Clock Configuration



## Step 6: Middleware and Connectivity Setting Put **Default**



## Step 7: **Increase** Heap Size.



## Step 8: Generate Code for MDK-ARMV5.