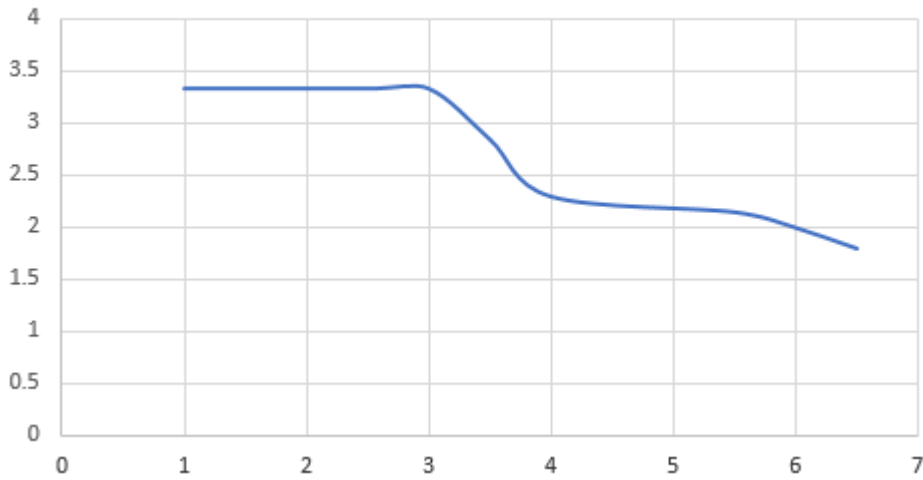


Hi

I'm playing around with an ST25DV\_Discovery\_ANT\_C6 and an ST25R3911B-DISCO development board to test the energy harvesting features. One result of my tests yields, that the output voltage  $V_{EH}$  is limited to approx. 3.4V even though I can't find any explanation therefore in any application note or datasheet.

EH (V) vs distance (cm)



$R = 10k\Omega$

In the datasheet of the ST25DVxxx is written, that the voltage  $V_{EH}$  is NOT regulated. If that's true, I'm not able to understand my measurements.

Do you have any explanation for this behavior?

Thanks and best regards

Marco