



life.augmented



SensorTile.Box recover and firmware upgrade

A safe procedure

Download the STM32CubeProgrammer on your PC

- **Step 1:** Go to [STM32CubeProg](https://www.st.com/STMicroelectronics/doing_software_with_stm32cube.html) st.com page
- **Step 2:** Get Software and download it
- (**Step 2b:** [Register/Login](#) on st.com)
- **Step 3:** Install it on you PC
 - You could need admin rights
 - If you have DFuSe driver installed, please uninstall
- **Step 4:** Launch the STM32Cube Programmer

STM32CubeProg ACTIVE Save to myST

STM32CubeProgrammer software for all STM32

[Get Software](#) [Download databrief](#)

[Overview](#) [Documentation](#) [Tools & Software](#)

[Get Software](#) [Featured Videos](#) [Featured Products](#) [Latest from ST](#)

Step 2

Get Software

Part Number	General Description	Software Version	Download	Previous versions
+ STM32CubeProg	STM32CubeProgrammer software for all STM32	2.5.0	Get Software	Select version

Welcome back!

Enter your e-mail address and password to login your myST user.

E-mail address

Password

Remember me on this computer.

[Login](#)

[Forgot password?](#)

Step 2b

New user?

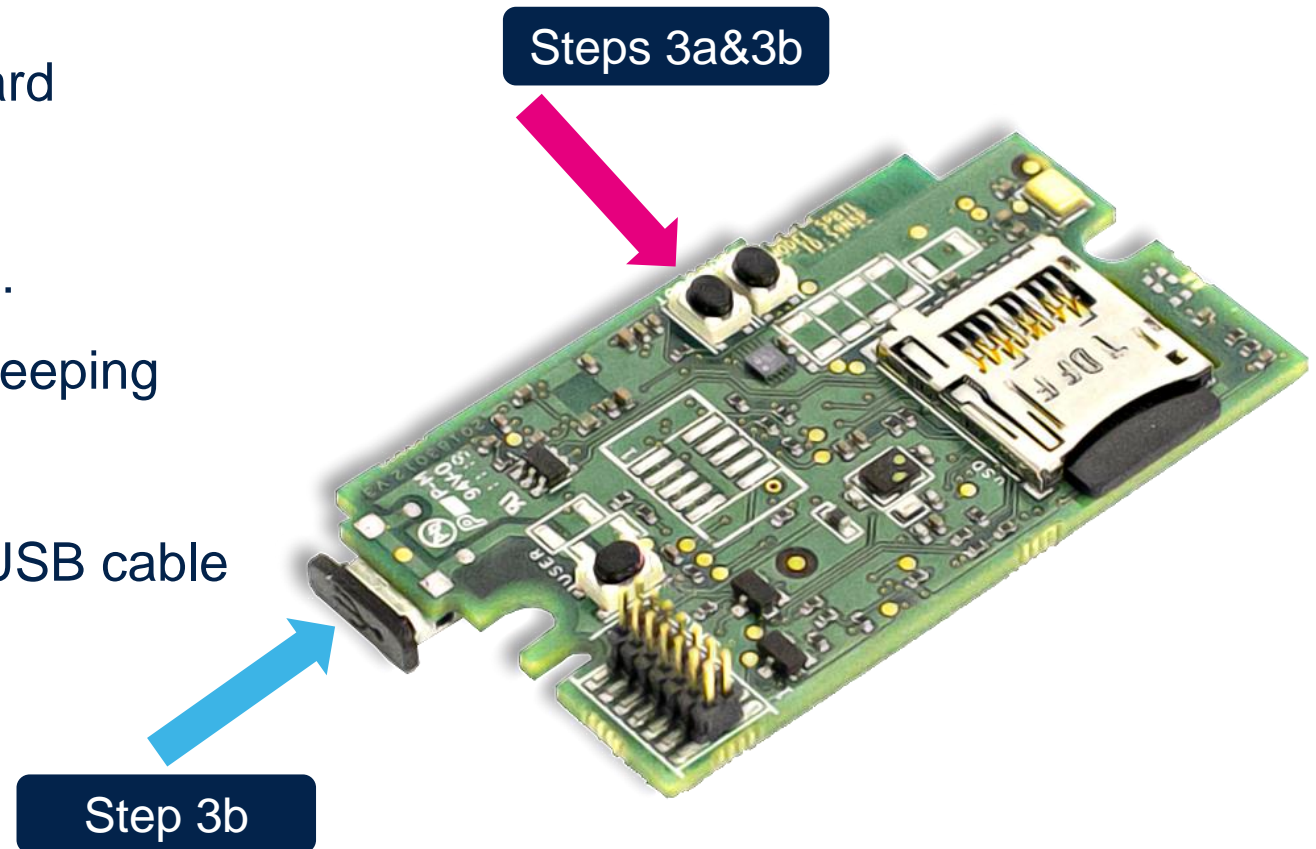
myST brings you a set of personalized features:

- Participate to ST Events
- Stay informed with ST eNewsletters
- Get help with ST Online Support
- Discuss on the ST Community
- Benefit from our Online Design Tools
- Download Software
- Order free samples
- Manage your weekly product updates
- Buy ST Products & Tools

[Create Account](#)

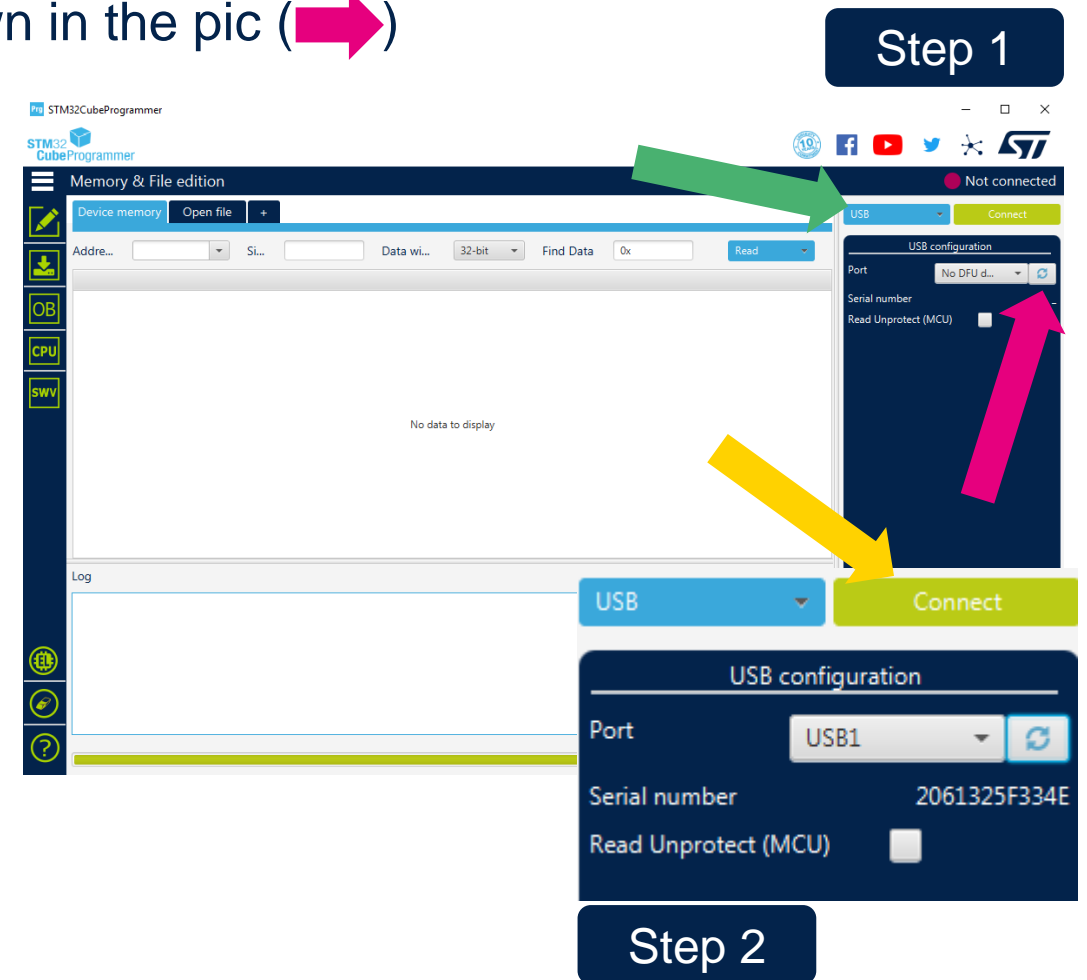
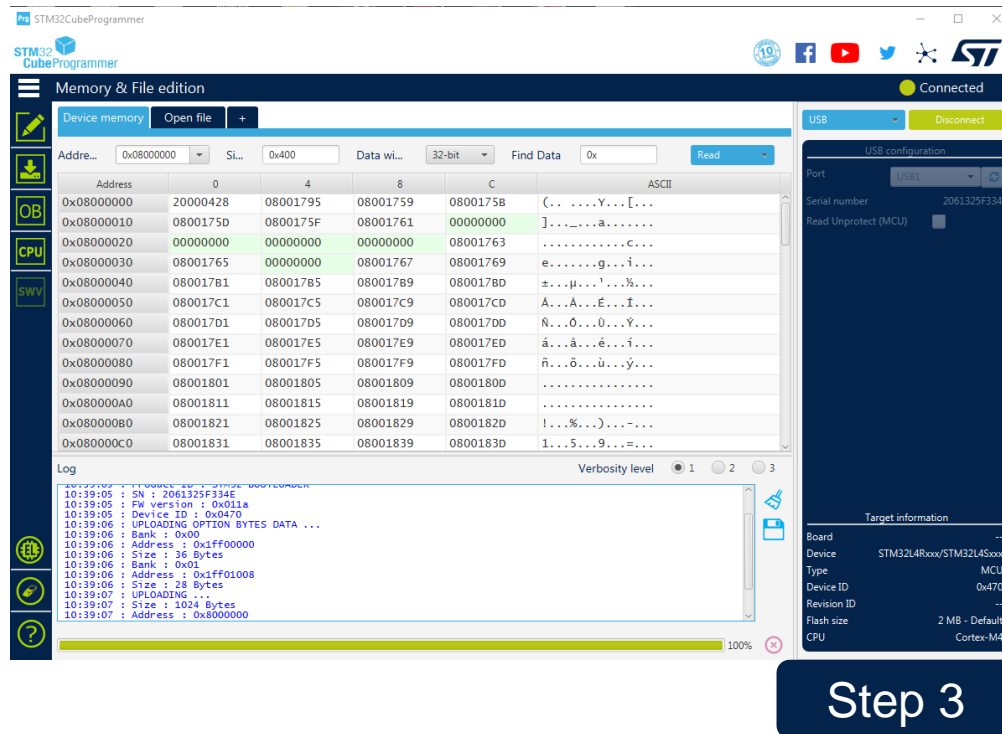
Configure the SensorTile.box for direct firmware upgrade (DFU)

- **Step 0:** Download and unzip the *SensorTile.box_V3p4p4_BL.zip* file
 - You can find this file attached to this post
- **Step 1:** Unscrew the box and extract the board
- **Step 2:** Disconnect the battery
- **Step 3a:** Press the BOOT button (➡) and...
- **Step 3b:** ...plug the USB cable (➡) while keeping the BOOT button pressed
- **Step 4:** Release the BOOT button after the USB cable has been plugged



Configure the STM32 Programmer

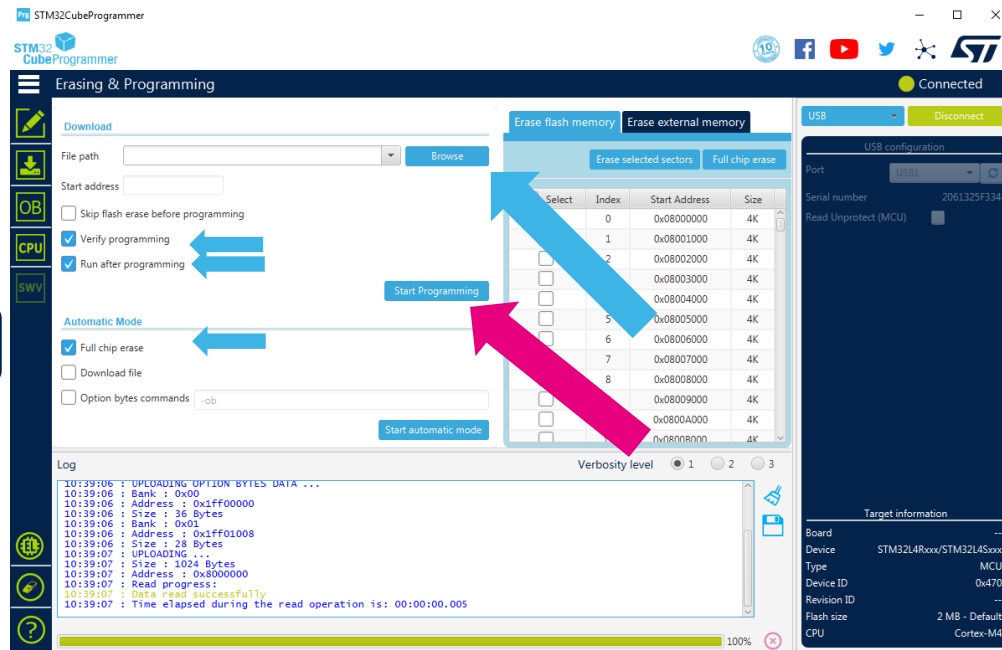
- **Step 1:** Select USB (→) and refresh the button shown in the pic (→)
 - USB port name will appear
- **Step 2:** Press «Connect» button (→)
- **Step 3:** Press «Download» button (→)



Program the SensorTile.box

- **Step 1:** Select the *SensorTile.box_V3p4p4_BL.bin* file attached to the post and configure the blue flags as in the pic (➡). Then press «Start Programming» (➡)
- **Step 2:** Wait until the download is completed, then press OK to the pop-ups (➡)
- **Step 3:** disconnect USB cable, reconnect the battery and reconnect USB cable. You should now be able to detect your SensorTile.box via BLE with the STBLE Sensor app.

Step 1



Step 2

