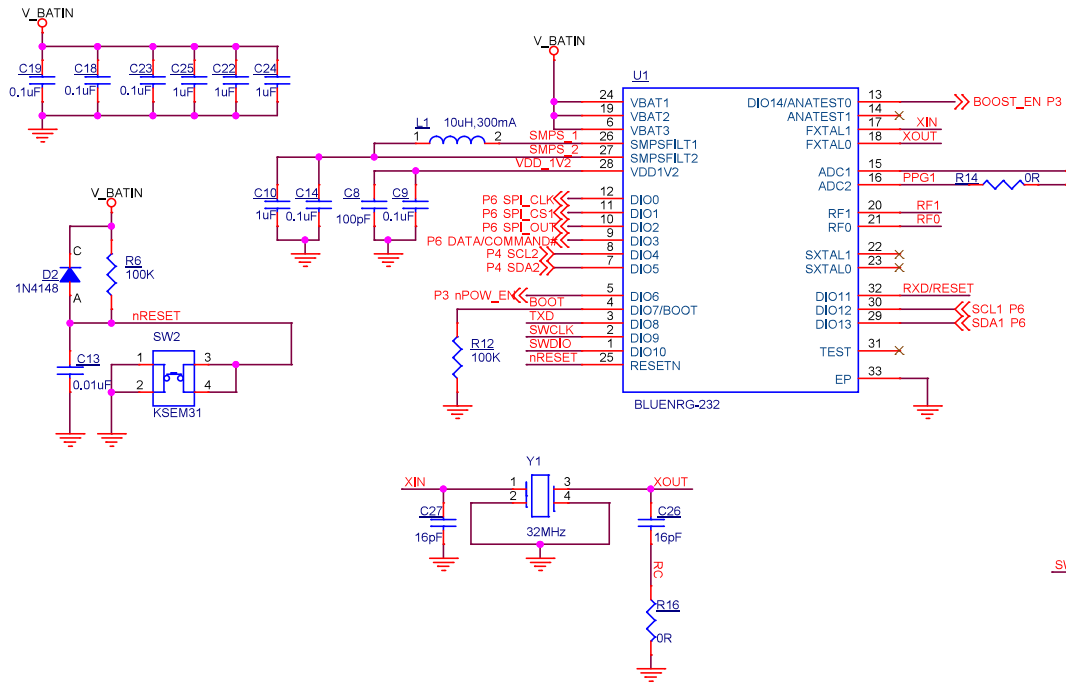
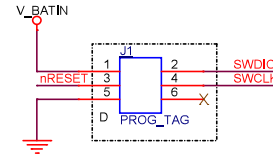


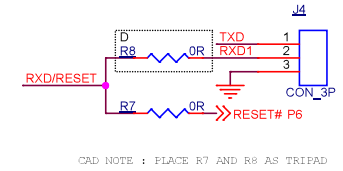
CONTROLLER SECTION



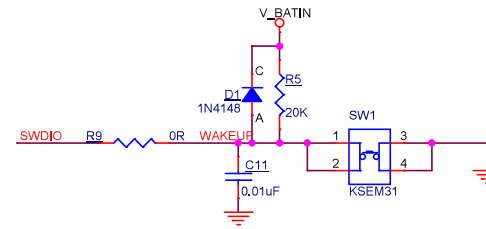
PROG CONN



UART HEADER



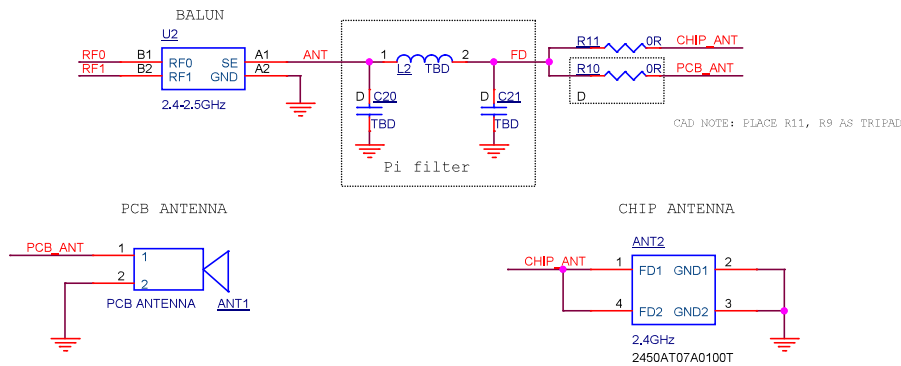
WAKE UP SWITCH



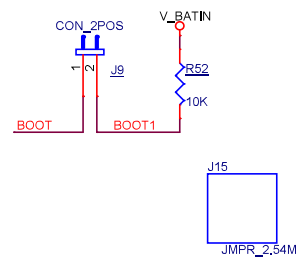
DESIGN NOTE : The wake-up time is typically 200 μ s at 3V
 DESIGN NOTE : WAKE UP LEVEL SHOULD SET AS LOW IN PROGRAM
 I010 USED AS WAKEUP PIN

PIN	DEFAULT STATE
DIO3	PULL-DOWN
DIO6	PULL-DOWN
DIO7	PULL-DOWN
DIO11	PULL-UP
DIO14	PULL-DOWN

ANTENNA



BOOT MODE SEL



DESIGN NOTE : CLOSE THE JUMPER TO ENABLE UART BOOTLOADER

DESIGNED BY Z-CROSSING SOLUTIONS PVT. LTD

Title		
CONTROLLER		
Size	Document Number	Rev
B	ZC_SCH000331	A
Date:	Monday, May 25, 2020	Sheet 5 of 6