


# LIV Evaluation Board

## Schematics

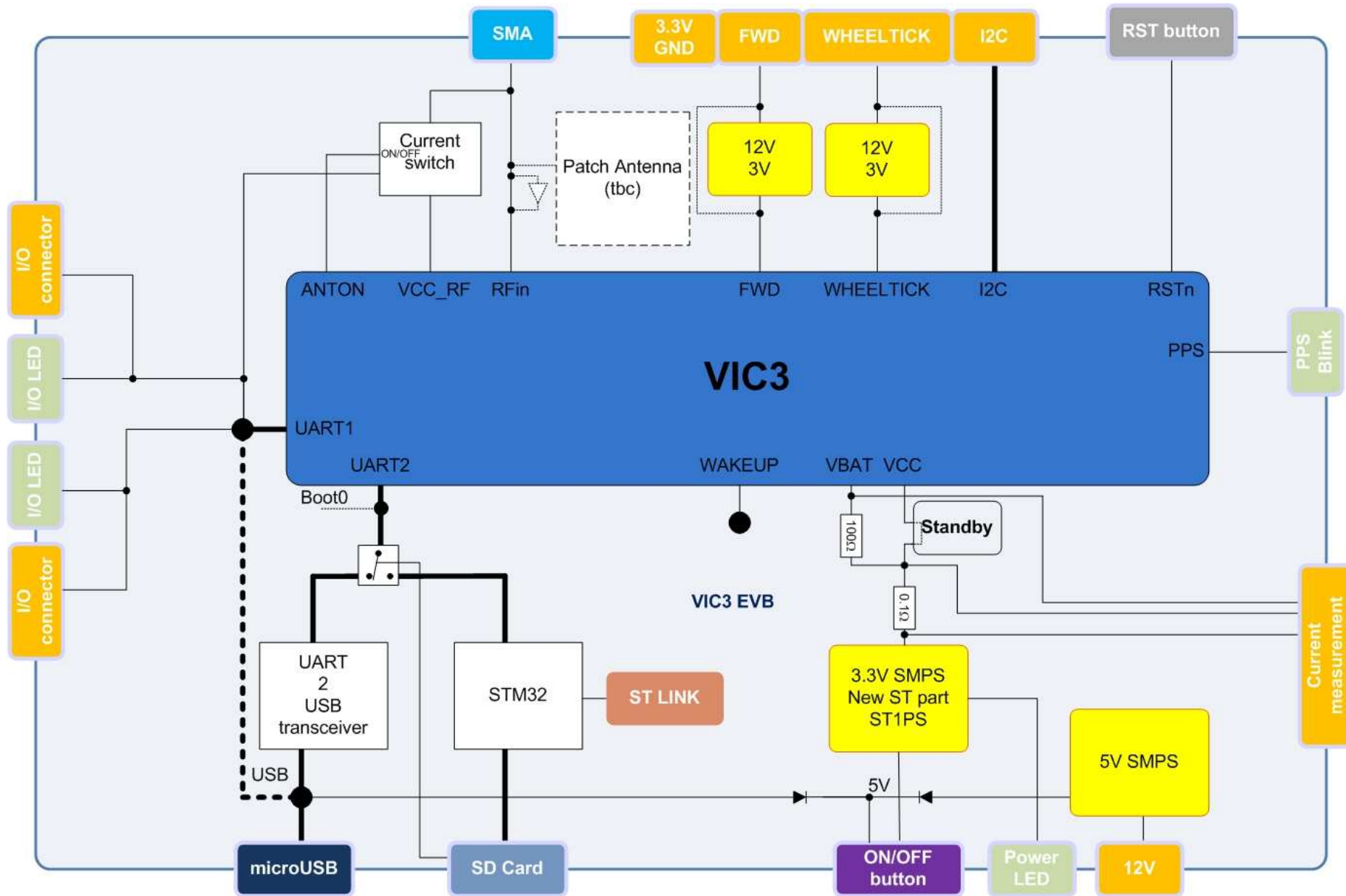
### SHEET NAME

PAGE 01 : Cover	REF DES: 0100 - 0199
PAGE 02 : Bloc diagram	REF DES: 0200 - 0299
PAGE 03 : VIC3	REF DES: 0300 - 0399
PAGE 04 : External Connections	REF DES: 0400 - 0499
PAGE 05 : Power	REF DES: 0500 - 0599

THE INFORMATION CONTAINED IN THESE SCHEMATIC SHEETS IS PRELIMINARY AND SUBJECT TO CHANGE WITHOUT NOTICE.  
 STMicroelectronics BEARS NO RESPONSABILITY FOR ANY ERRORS IN THESE SCHEMATIC SHEETS.

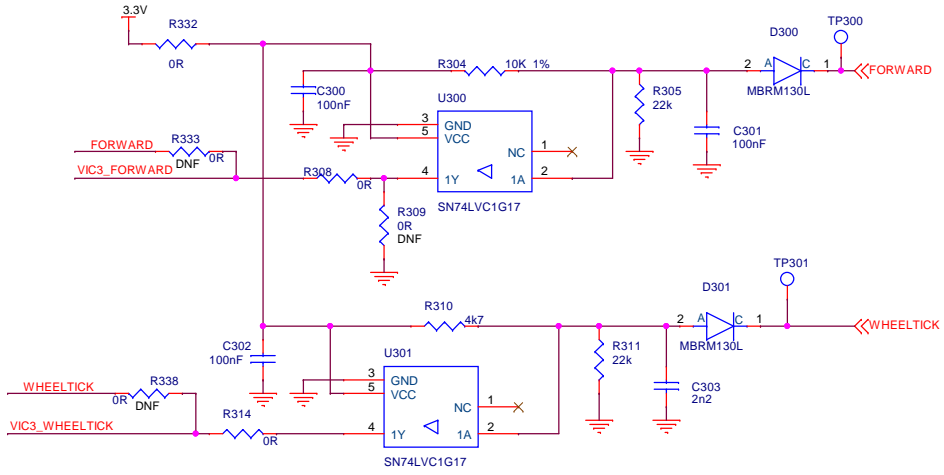
	Board Title VIC3_EVB_REV B		CONFIDENTIAL AND PROPRIETARY INFORMATION	
	Sheet Title PAGE 01: Cover		This drawing and the information herein, is not to be used or copied without the prior written permission of STMicroelectronics.	
	Doc No (435/xxxxxx)	Date Monday, January 13, 2020	Rev (xx)	Sheet 1 / 5

# Bloc diagram

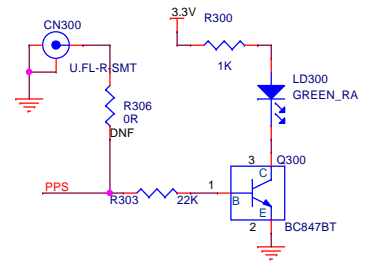


-----Dashed line means optional features and needs to open the box for activation

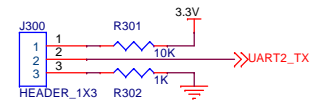
### ODDO & REAR



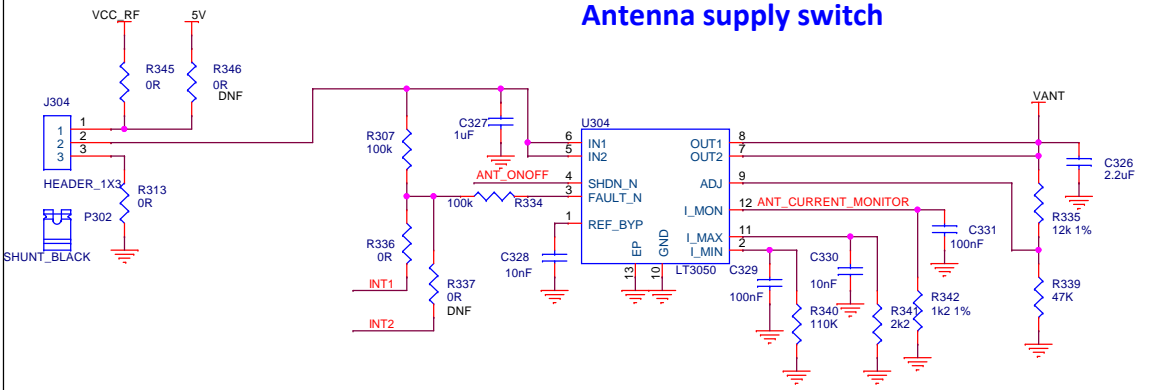
### PPS



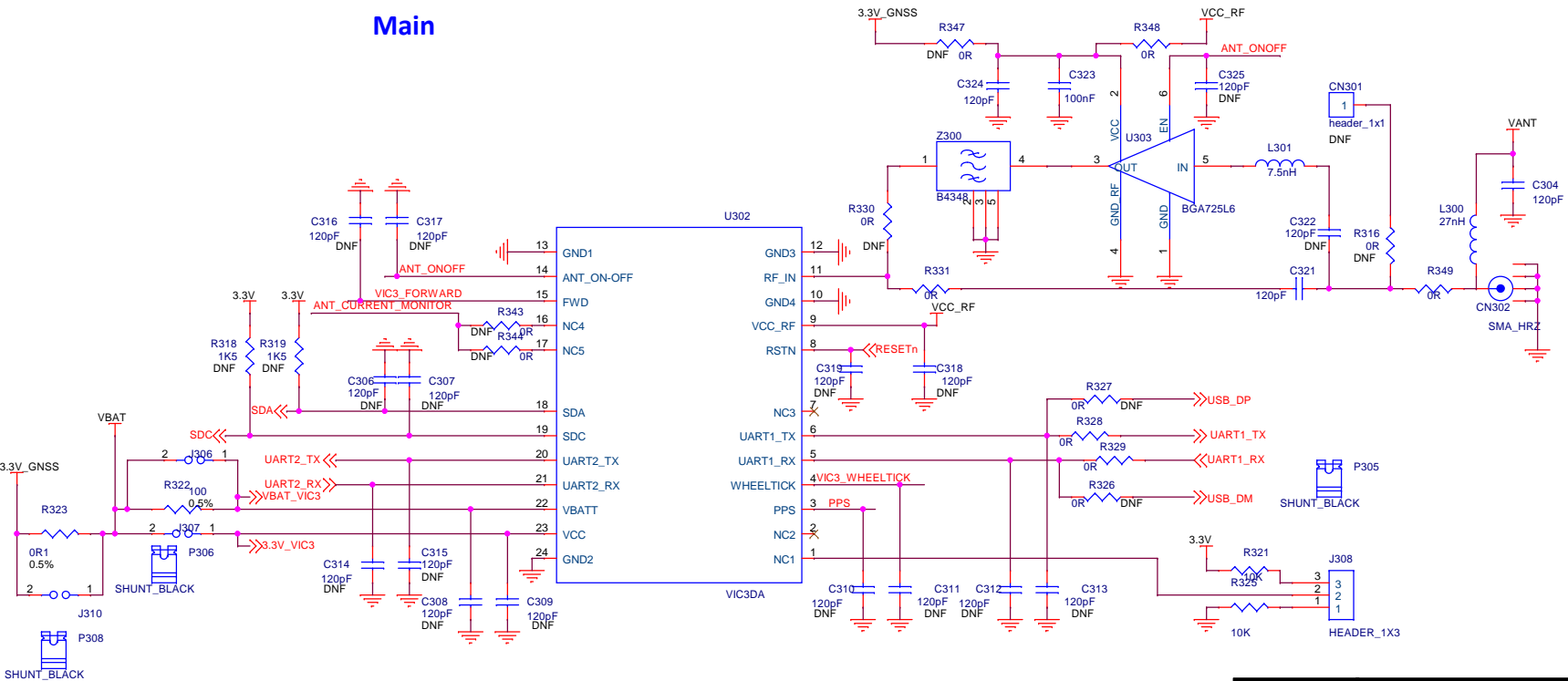
### Boot



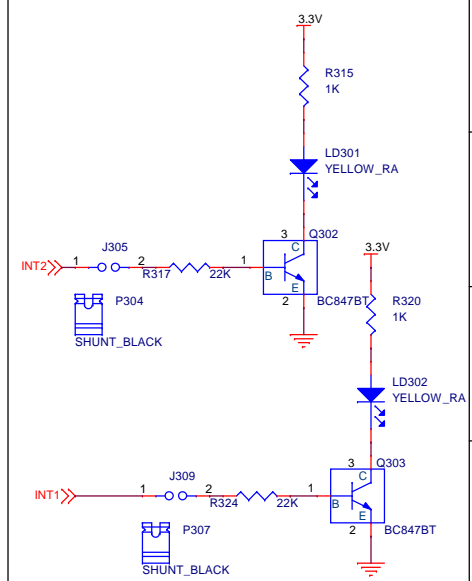
### Antenna supply switch



### Main

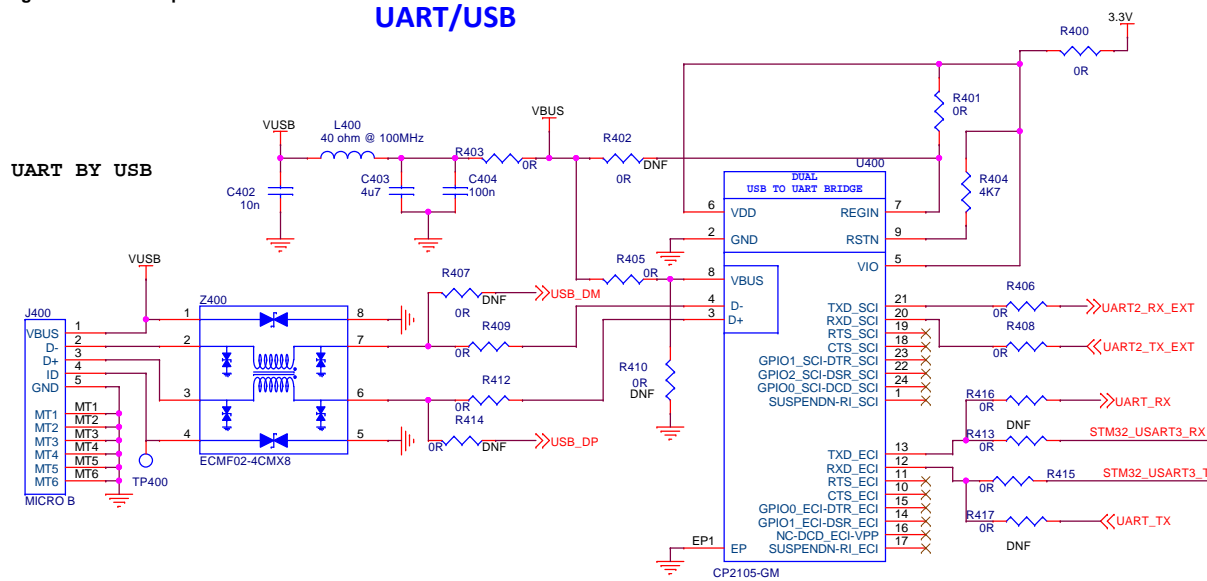


### LED

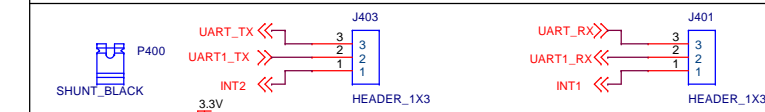
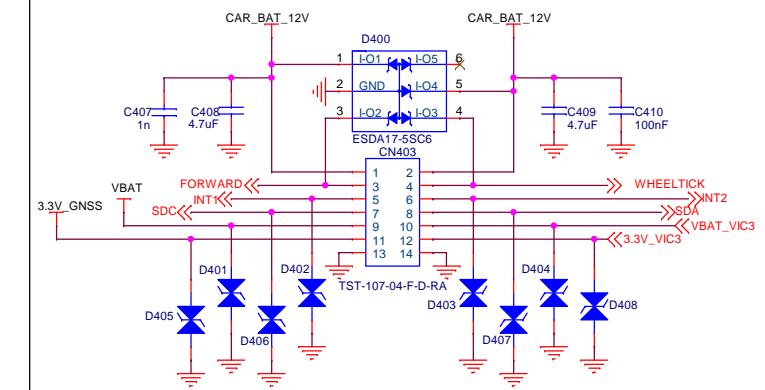


### UART/USB

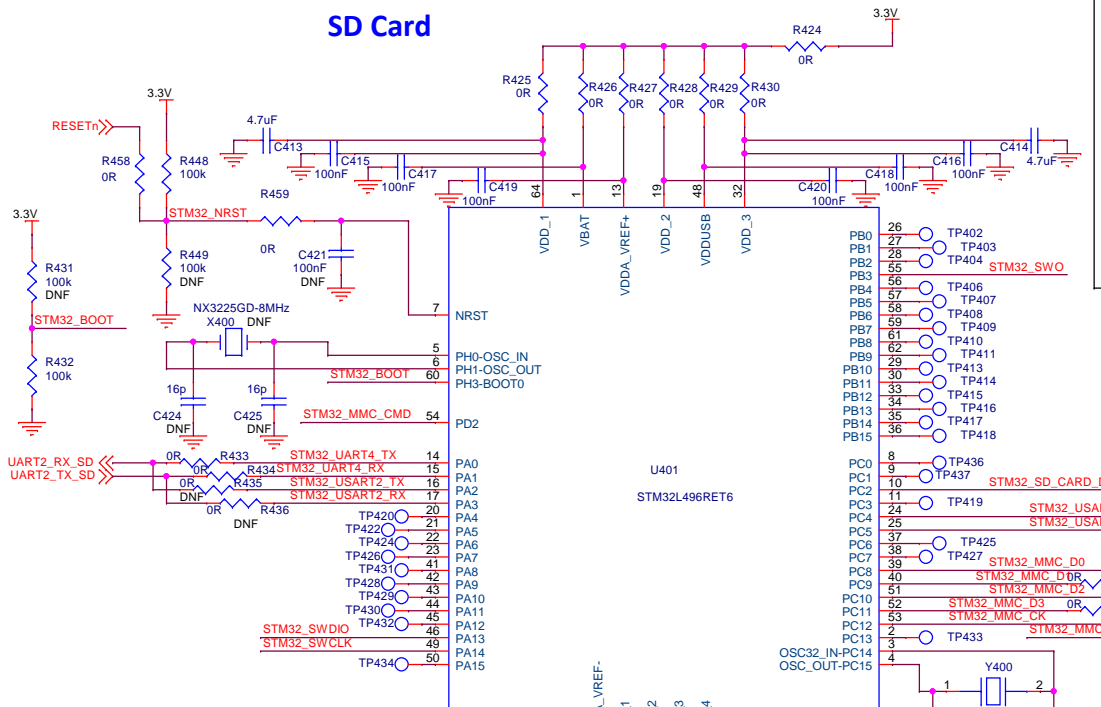
#### UART BY USB



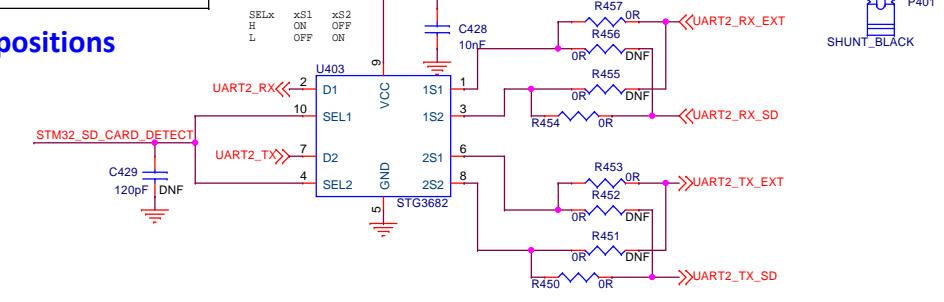
### External connexion



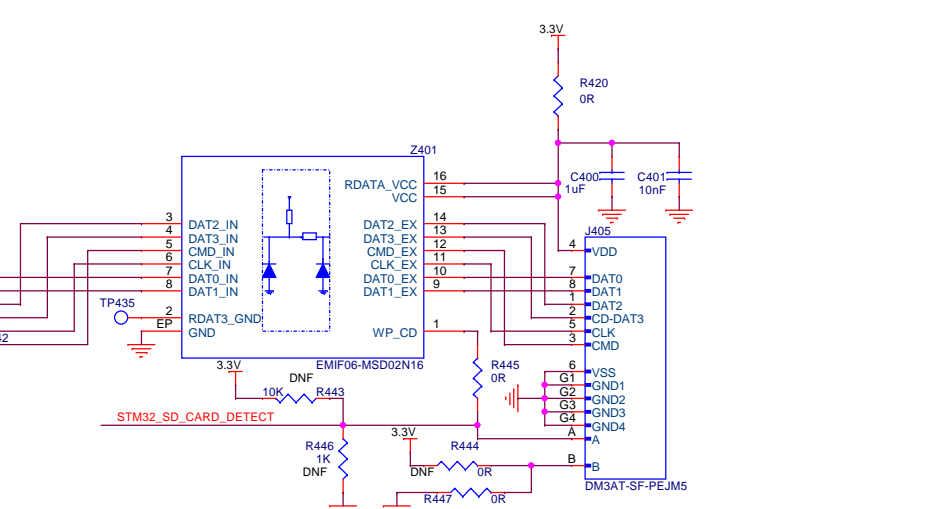
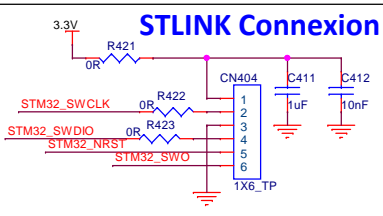
### SD Card



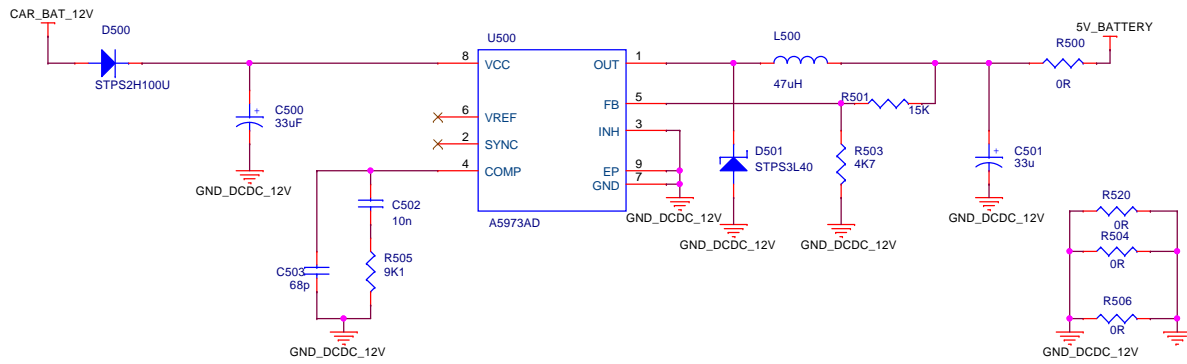
### UART positions



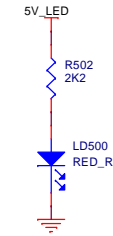
### STLINK Connexion



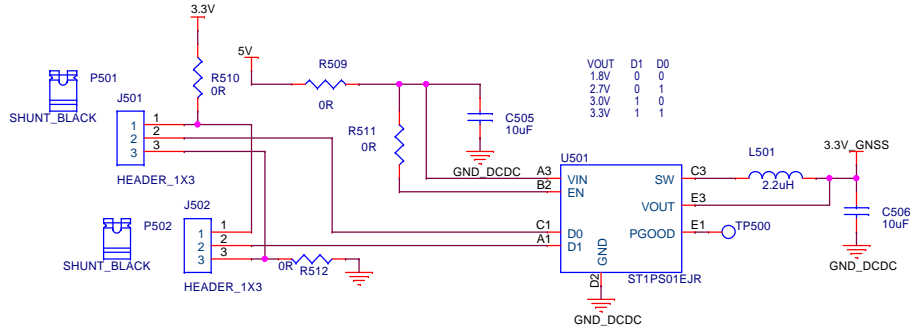
### CAR BATTERY DC/DC



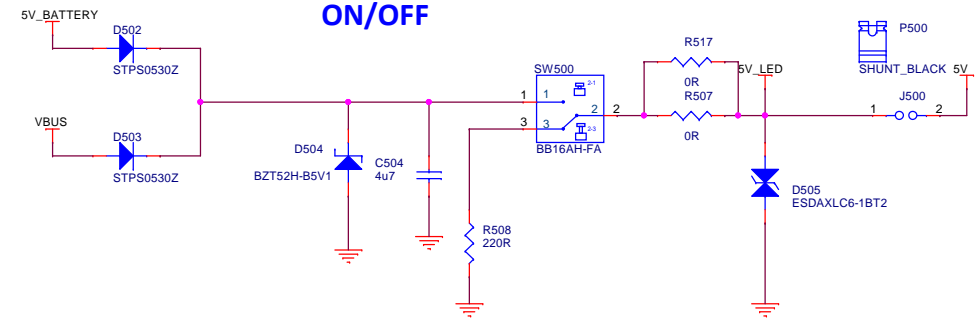
### Power LED



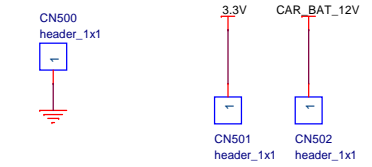
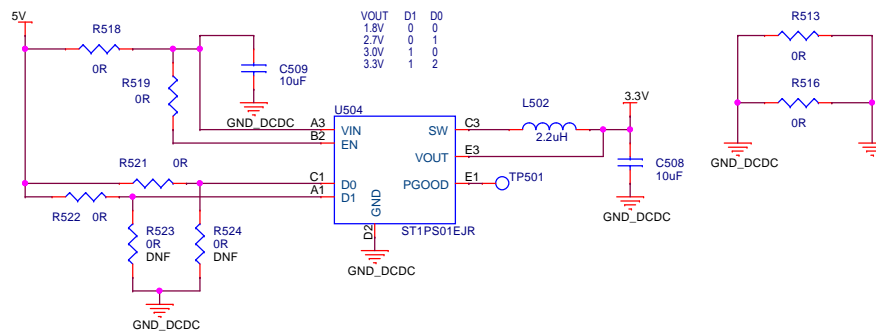
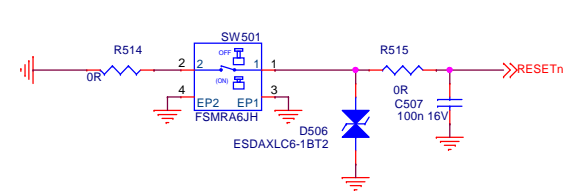
### 3.3V BATTERY DC/DC



### ON/OFF



### Reset



HW500  
 XXXXY-AABBCC  
 12345678-123  
 HW\_LABEL\_SERIAL\_NUMBER